

# Reopening and the Path to Recovery

04/5/21 Update

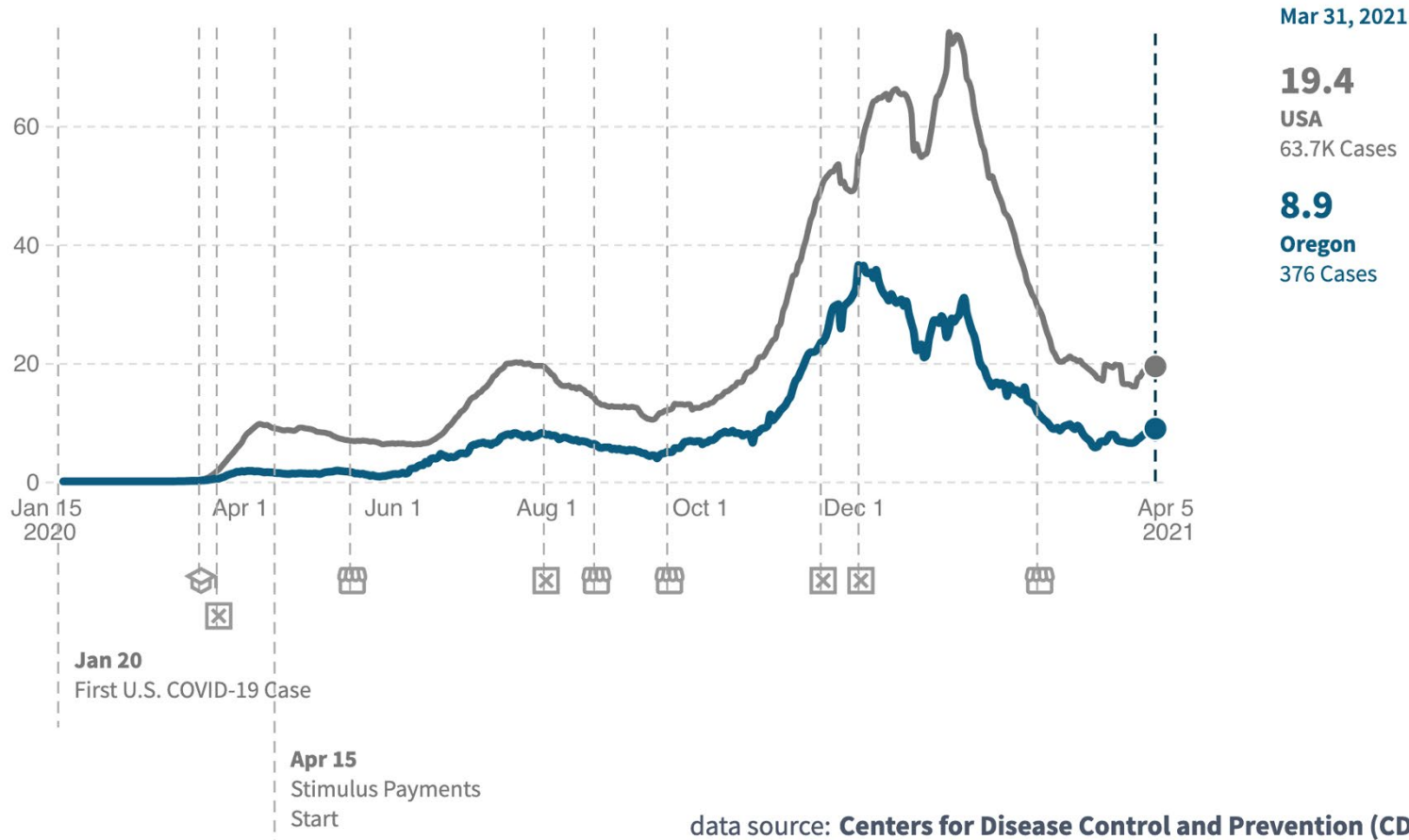
**ECONorthwest**

ECONOMICS • FINANCE • PLANNING

# COVID-19 Cases showed a slight increase in April

## Daily Reported COVID-19 Cases per 100,000 People

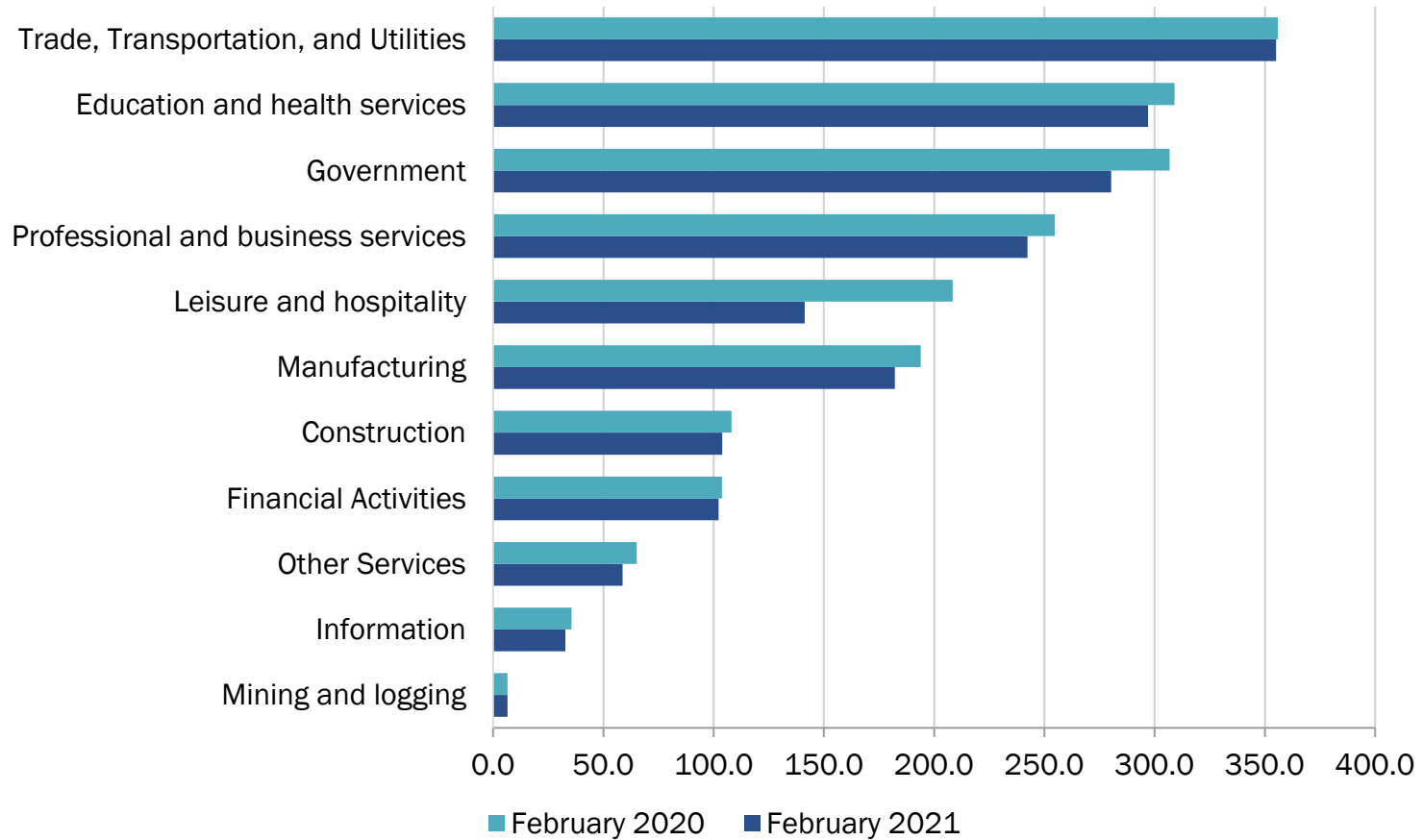
In **Oregon**, on **March 31 2021**, there were **8.9** newly reported COVID-19 cases per 100,000 people.



Source: Opportunity Insights

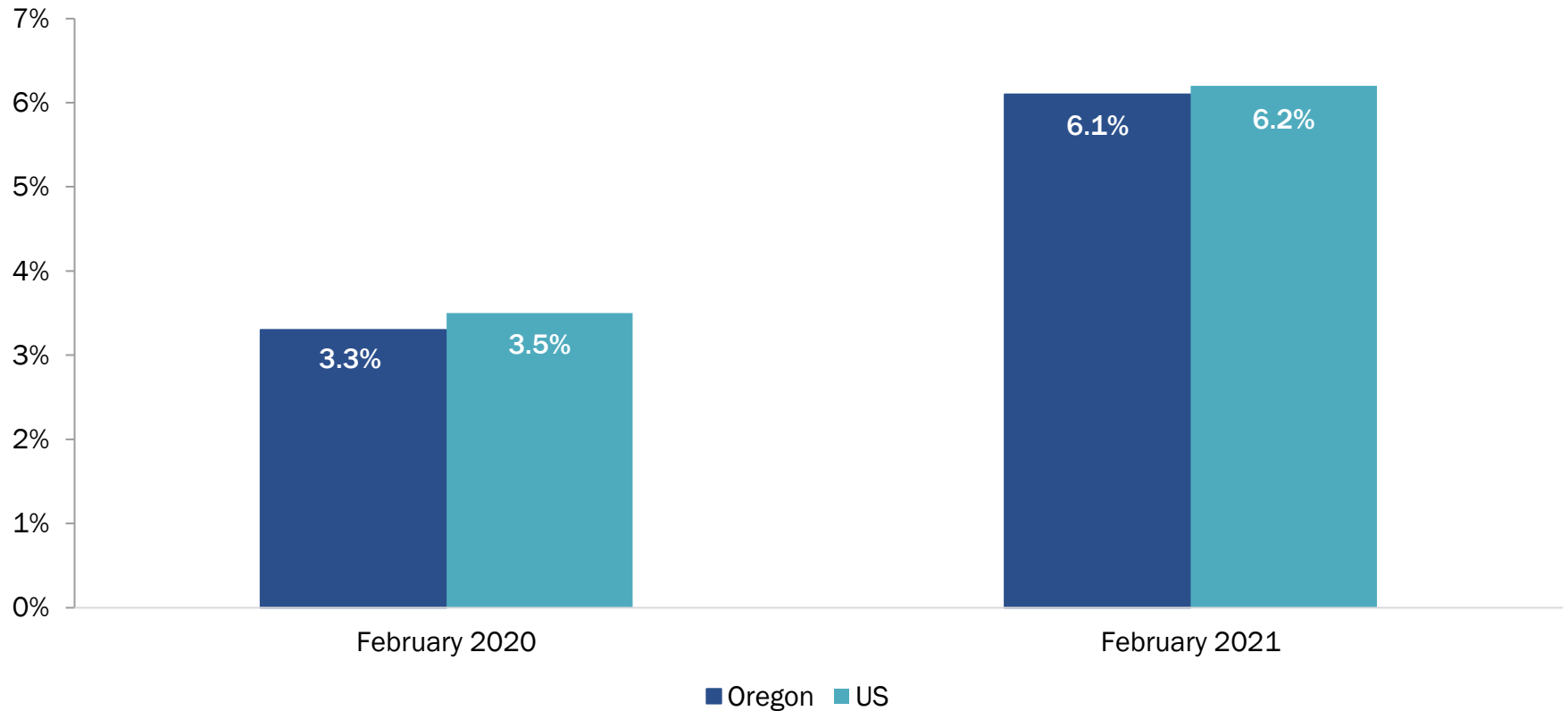
# Employment Still Recovering from Historic Lows

Total Number of Employees (Thousands) by Supersector, February 2020 and February 2021



# Oregon's Unemployment Rate

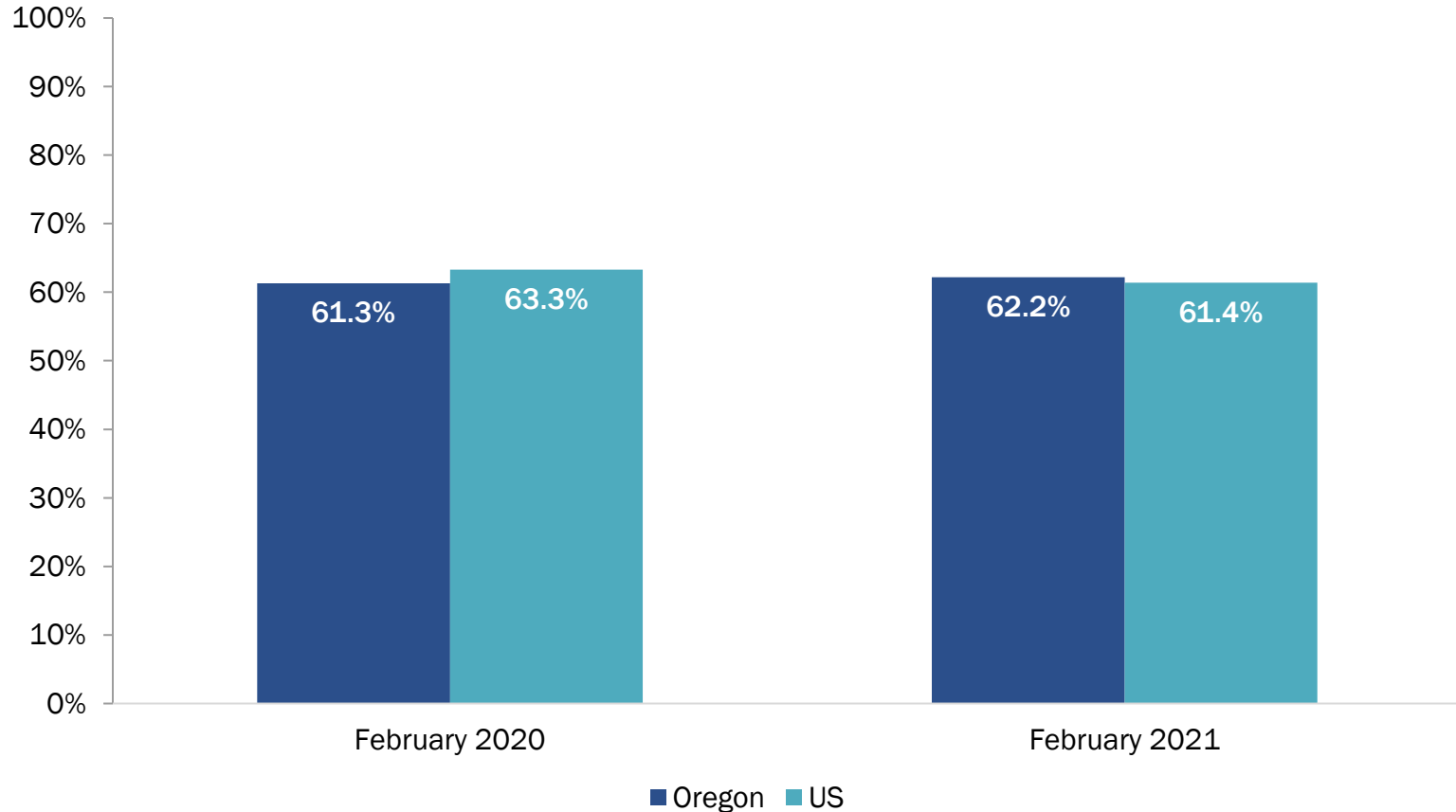
Unemployment Rate, Oregon and US, February 2020 and February 2021



Source: Bureau of Labor Statistics

# Oregon's Labor Force Participation Rate

Labor Force Participation (LFP) Rate, Oregon and US,  
February 2020 and February 2021

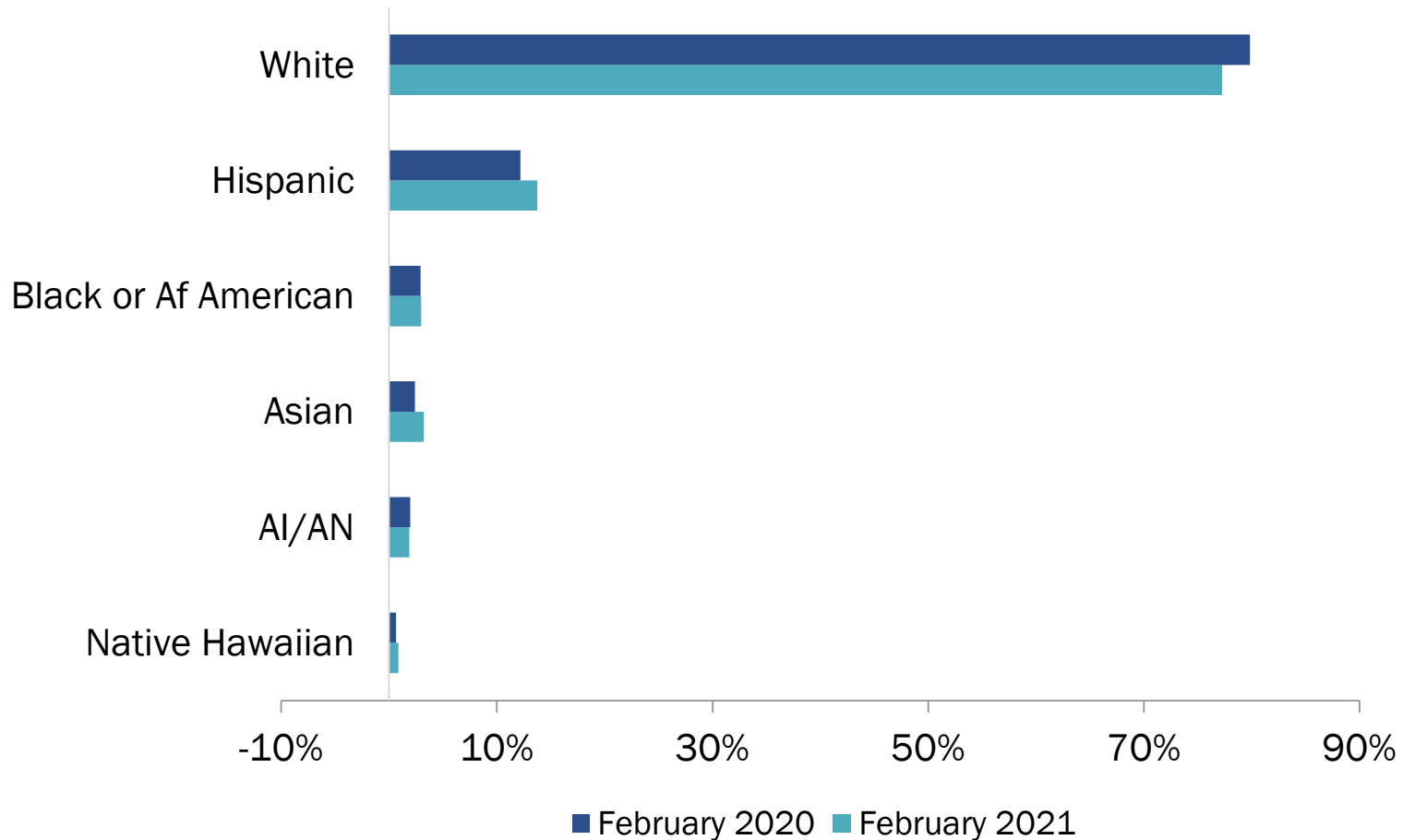


Source: Bureau of Labor Statistics

\* These results are preliminary and may be revised downward.

# Share of Continuing Claims by Race/Ethnicity

Oregon's Share of Continuing Unemployment Insurance (UI) Claims by Race and Ethnicity, February and February 2021

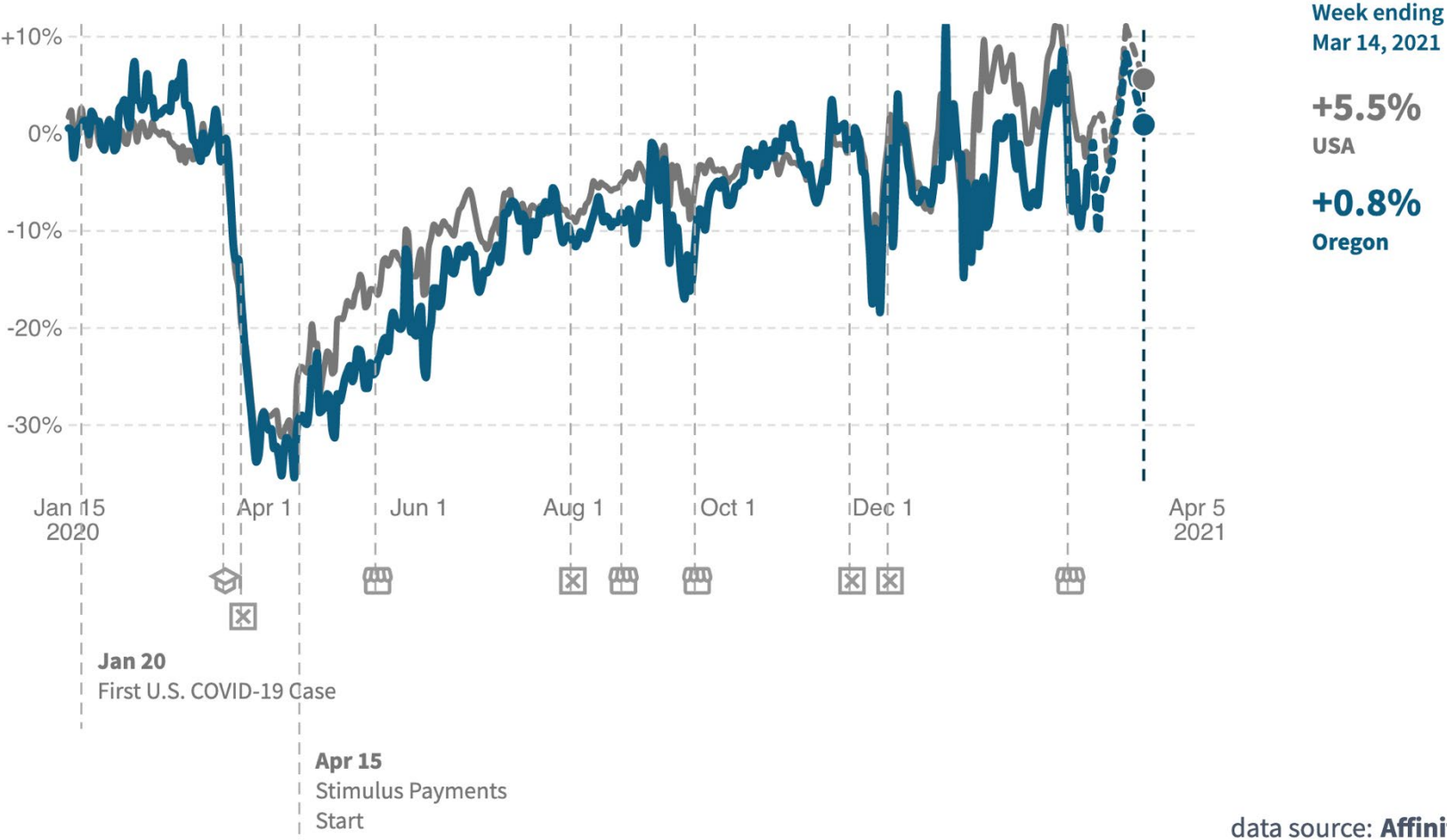


Source: Quality Info.

# Consumer Spending Picking up in February

## Percentage Change in Consumer Spending Compared to February 2021

In **Oregon**, as of **March 14 2021**, total spending by all consumers **increased** by **0.8%** compared to January 2020.



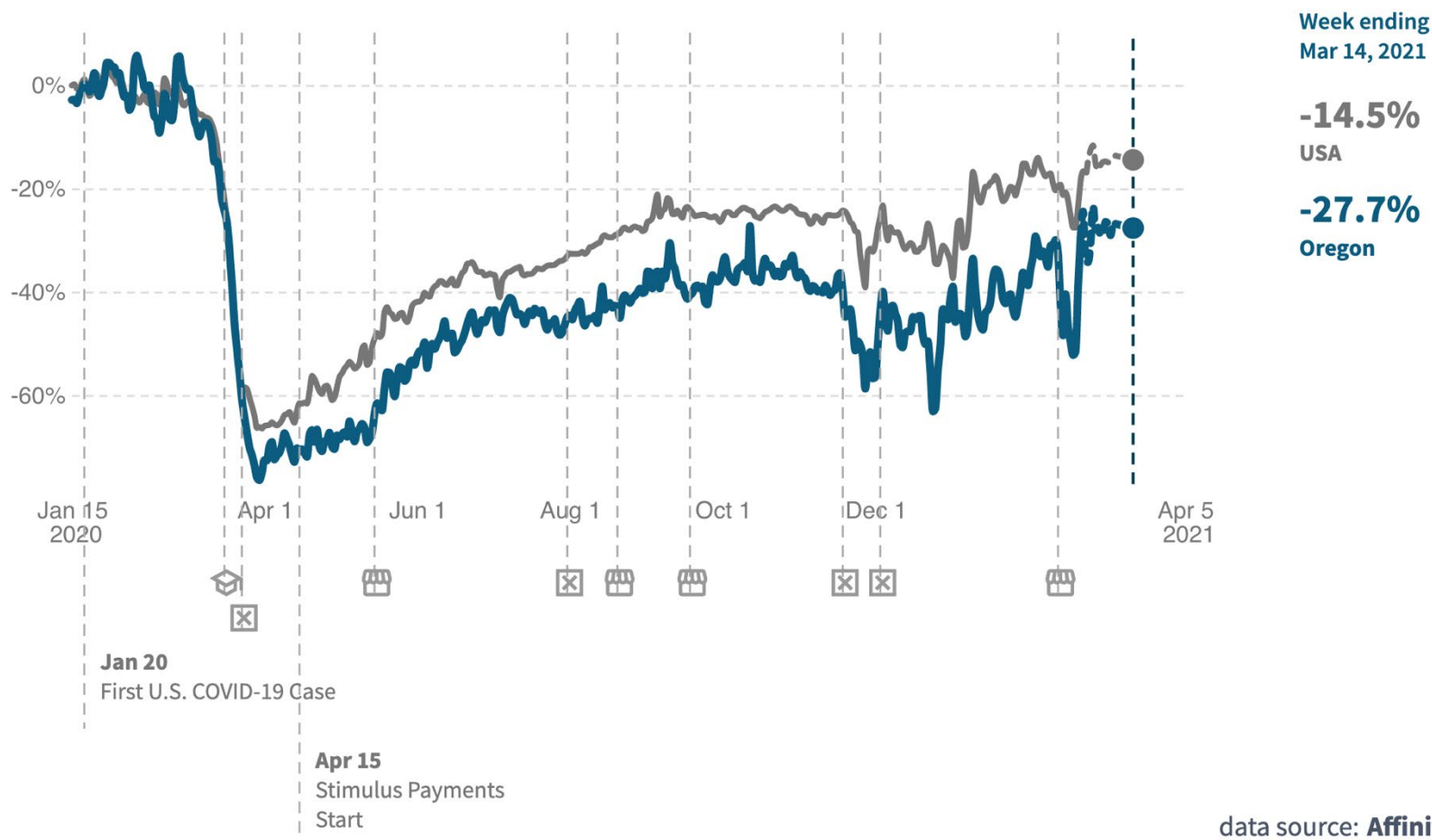
Source: Opportunity Insights

data source: **Affinity**

# Oregon's Restaurant/Hotel Spending Remains Below US

## Restaurant/Hotel Spending by All Consumers Compared to February 2021

In **Oregon**, as of **March 14 2021**, restaurant and hotel spending by all consumers **decreased** by **27.7%** compared to January 2020.



Source: Opportunity Insights

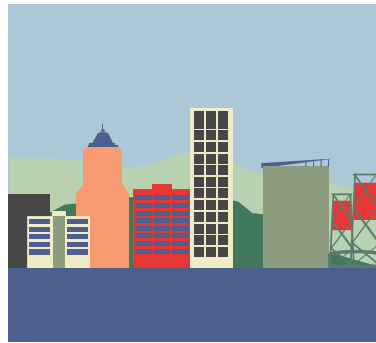


# ECONorthwest

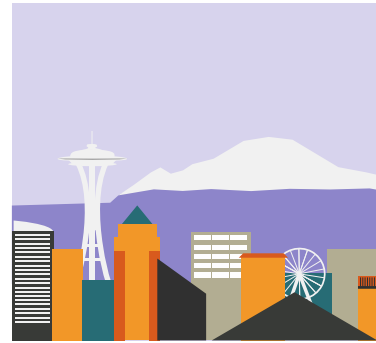
ECONOMICS • FINANCE • PLANNING



Eugene



Portland



Seattle



Boise